

Installer's Reference

UC-12-401-R0-012620



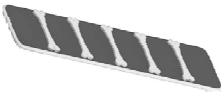





Adventure Peak

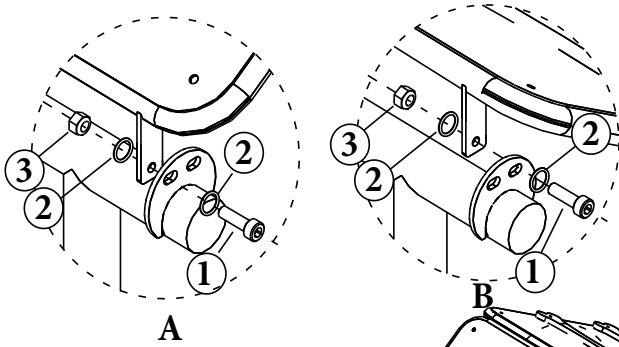
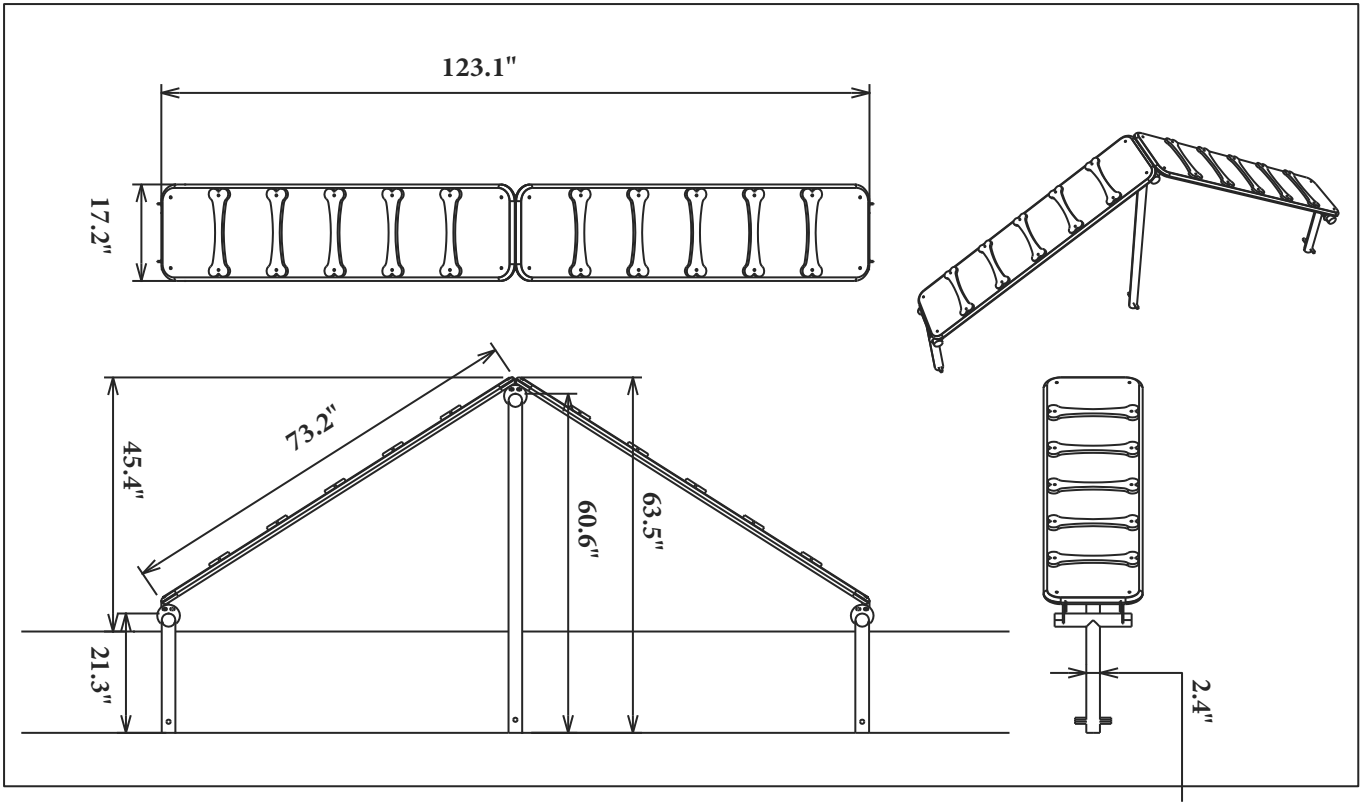
Know What's Below

As with all projects involving digging, start by knowing what is in the ground below. Underground utilities may include cable, electric, sprinklers, sewer, water, telecommunications, drainage pipes and sprinklers. You can usually accomplish this with one phone call (Dial 811) to your state's underground utility service.

Conduct an Inventory

Begin installation with of hardware and parts, assuring everything you need is onsite when you begin.

	NO.	ITEMS NAME	PICT	COLOR	QTYS	PKGS	SET
 <p>(Assembled Unit)</p>	1	Ramp		Blue or Green	1	PC	4
	2	Ramp		Blue or Green	1	PC	
	3	Tall Post		Tan	1	PC	
	4	Short Posts		Tan	2	PCS	
Hardware	1	 TAMPER PROOF TORX-BOLT M10x30			8	PCS	1
	2	 FLAT WASHER M10			16	PCS	
	3	 LOCK NUT M10			8	PCS	



1. TAMPER RESISTANT TORX-BOLT, M10x25 (8)
2. FLAT WASHER, M10 (16)
3. LOCK NUT, M10 (8)

