

Tunnel Express Assembly Manual

Assembly Manual for Tunnel Express Slide

Tools needed for assembly:

1/2" socket and socket wrench
1/2" wrench

Optional Tools:

cordless impact drill
socket adapter
1/2" Ratchet wrench
Electric drill
3/8" drill bit

HARDWARE:

5/16" x 1" bolts



5/16" lock nuts



5/16" x 1 1/2" lag bolts



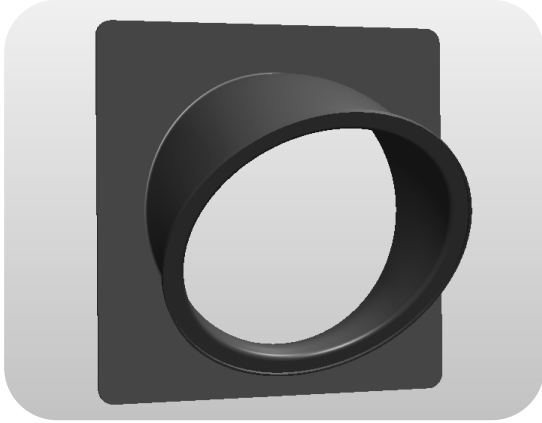
5/16" washers



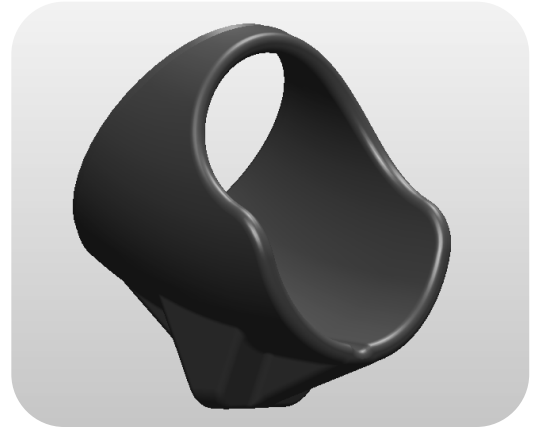
Assembly Manual for Tunnel Express Slide

Parts

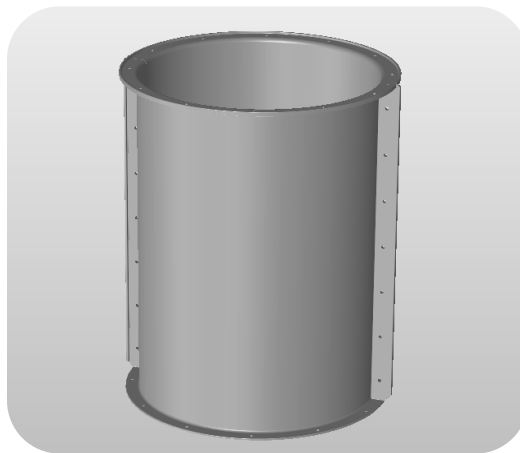
Entry tube with Cover plate



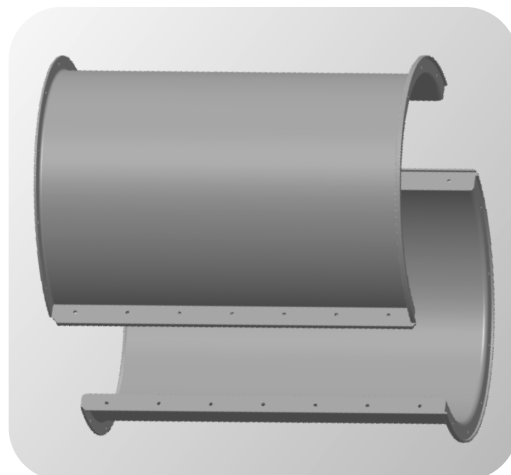
Tube Slide Exit



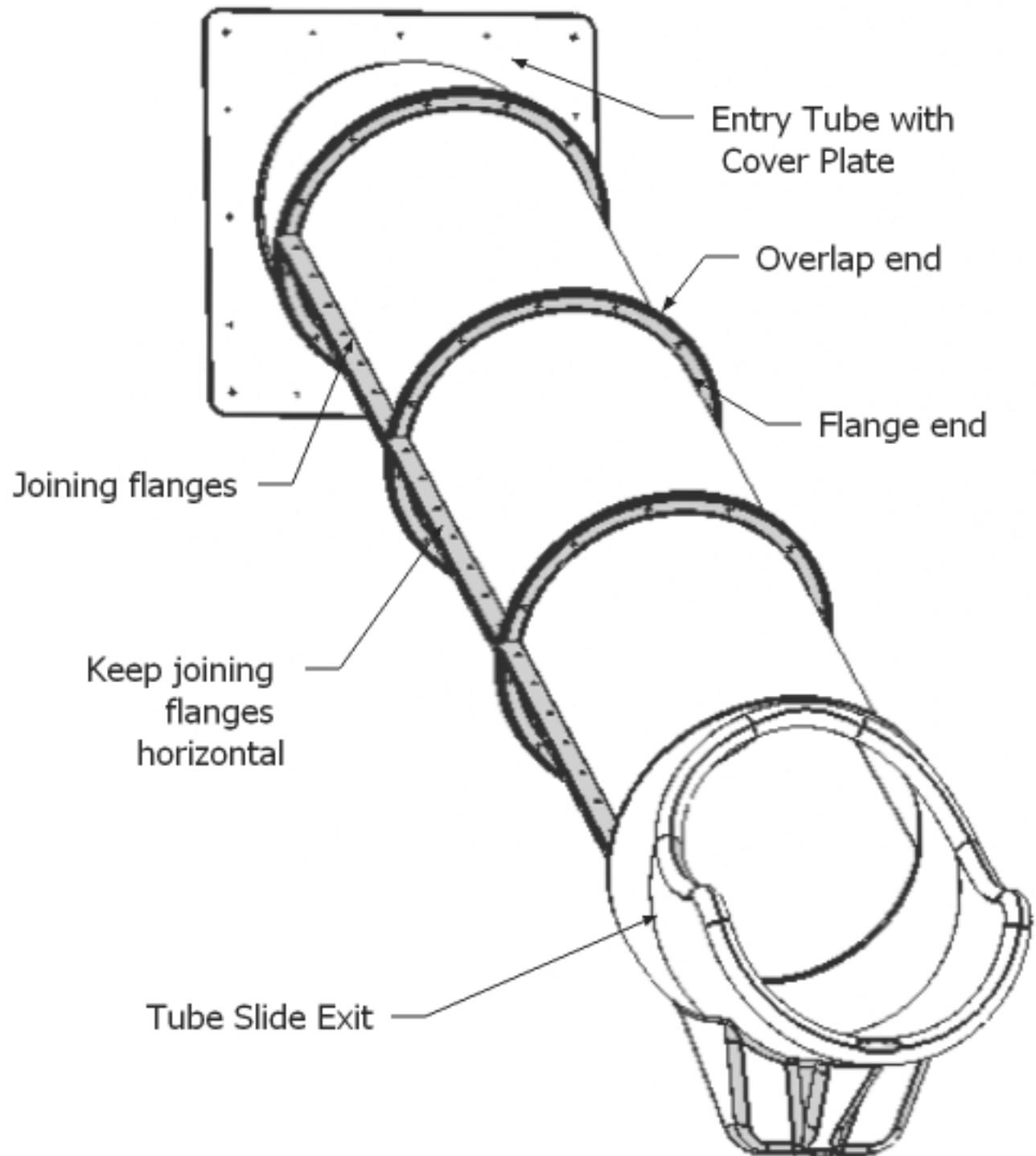
Assembled Straight Tube



Straight Tube Sections Consist of (1) Bottom and (1) Top Half



Quick Reference Guide



This drawing shows a 7ft Tunnel Express

Assembly Process

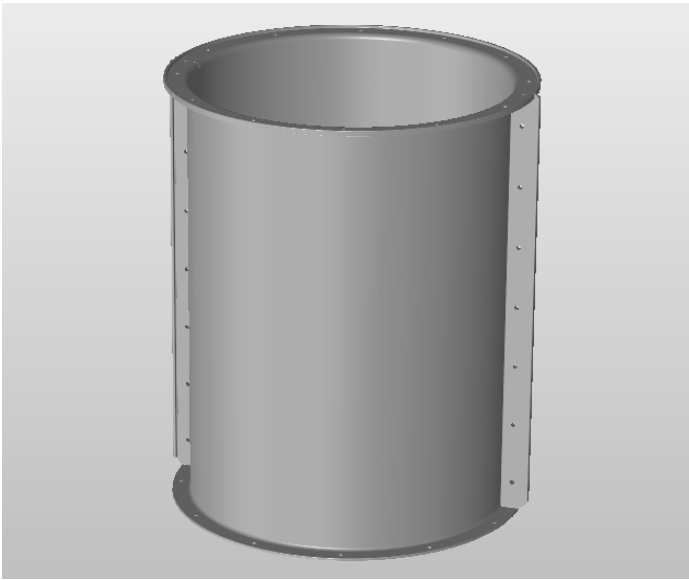
Step # 1

Assemble Straight Tube(s) secure (12) bolts with washers through holes on overlap side of joining flanges. Secure bolts on flange side with (12) washers and locknuts.

-9ft Tunnel Express will require (4) Straight Tubes

-7ft Tunnel Express will require (3) Straight Tubes
-5ft Tunnel Express will require (2) Straight Tubes

-3ft Tunnel Express will require (1) Straight Tubes



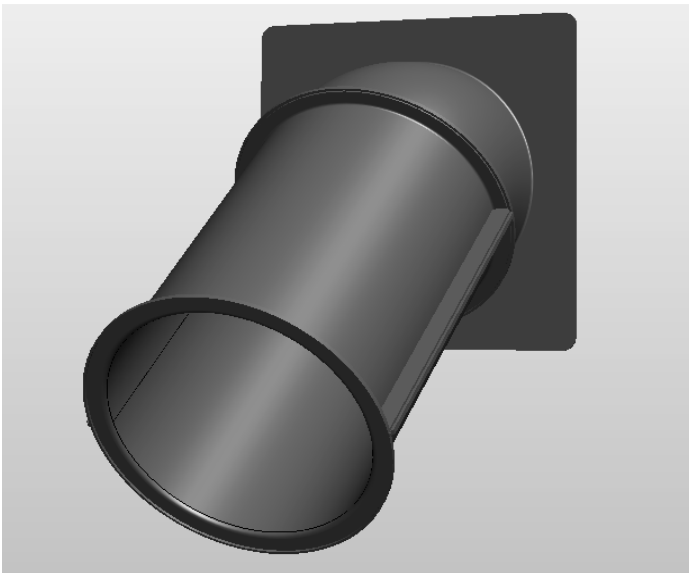
Step # 2

Install Entry Tube with Cover Plate on outside of tube slide opening. Center cover plate at opening keeping bottom of tube hole flush with deck. Secure cover plate to play set with (12) lag bolts and washers around the outside perimeter holes in cover plate.



Step # 3

Position Straight Tube flange end against Entry Tube so joining flanges of Straight Tube are horizontal. Secure Straight Tube to Entry Tube with (12) bolts with washers through holes in overlap end of Entry Tube. Secure bolts with (12) washers, and locknuts on flange end of Straight Tube and then tighten locknuts with tools. Tighten hardware after each step.



Assembly Process

Step # 4

Secure remaining Straight Tubes with (12) bolts with washers through holes on overlap ends of tube and secure bolts with (12) washers and locknuts on flange end of tubes.

The following deck heights will determine the amount of straight tubes.

-9ft Tunnel Express will require (4) Straight Tubes

-7ft Tunnel Express will require (3) Straight Tubes
-5ft Tunnel Express will require (2) Straight Tubes

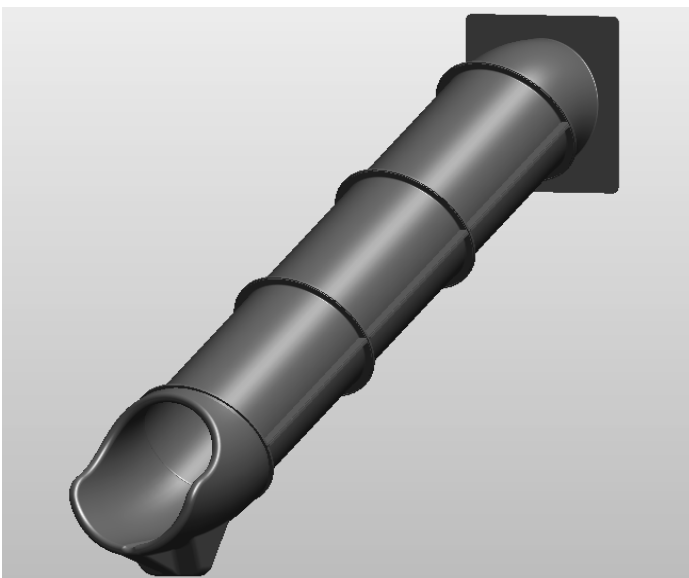
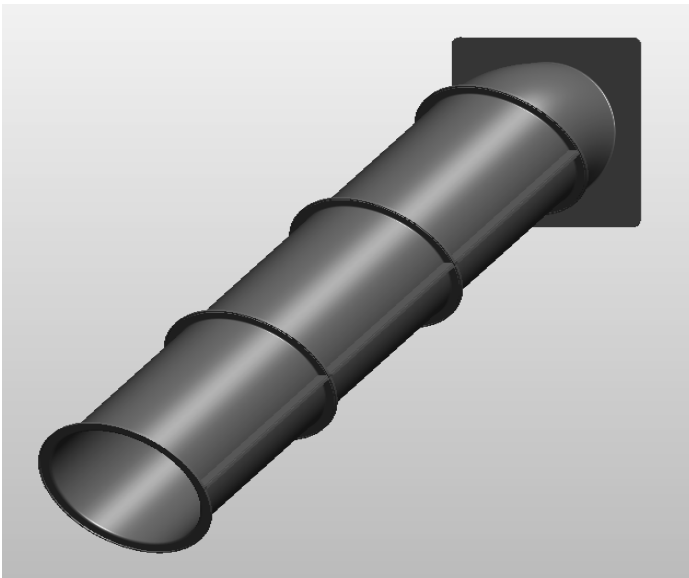
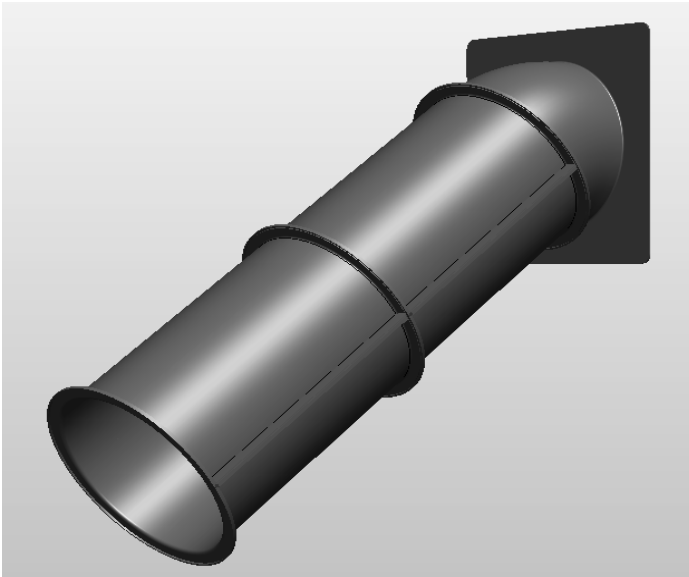
-3ft Tunnel Express will require (1) Straight Tubes

Step # 5

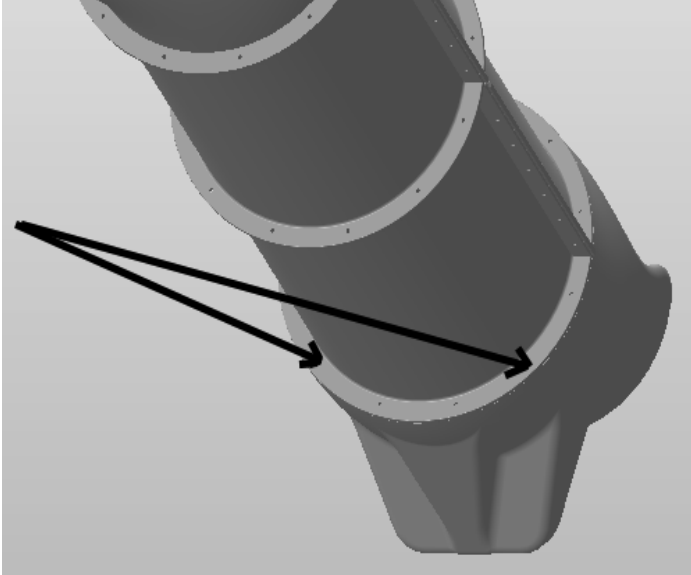
These pictures show the assembly of a 7ft deck height Tunnel Express. This repeats step #4 keeping the joining flanges horizontal and shows the installation of the third Straight Tube.

Step # 6

On the 7ft Tunnel Express repeat previous steps and secure fourth Straight Tube section. The last straight Tube will have the overlap trimmed short to fit on the Tube Slide Exit.

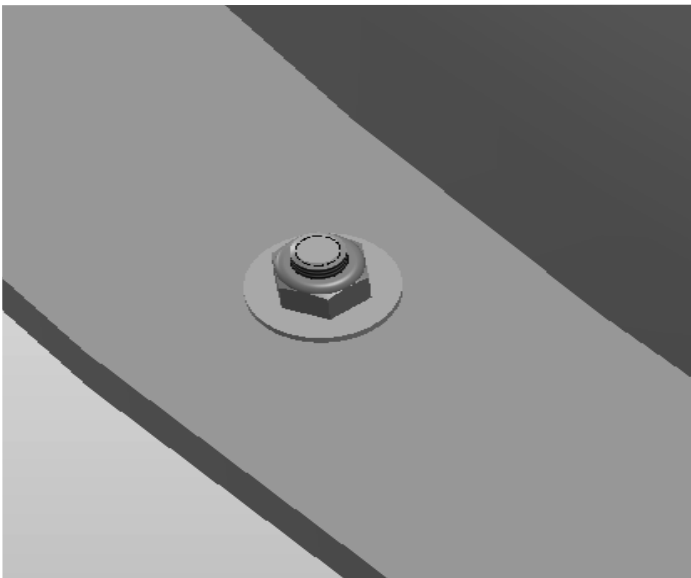


Assembly Process



Step # 7

Start all bolts by hand first and then tighten bolts with tools.



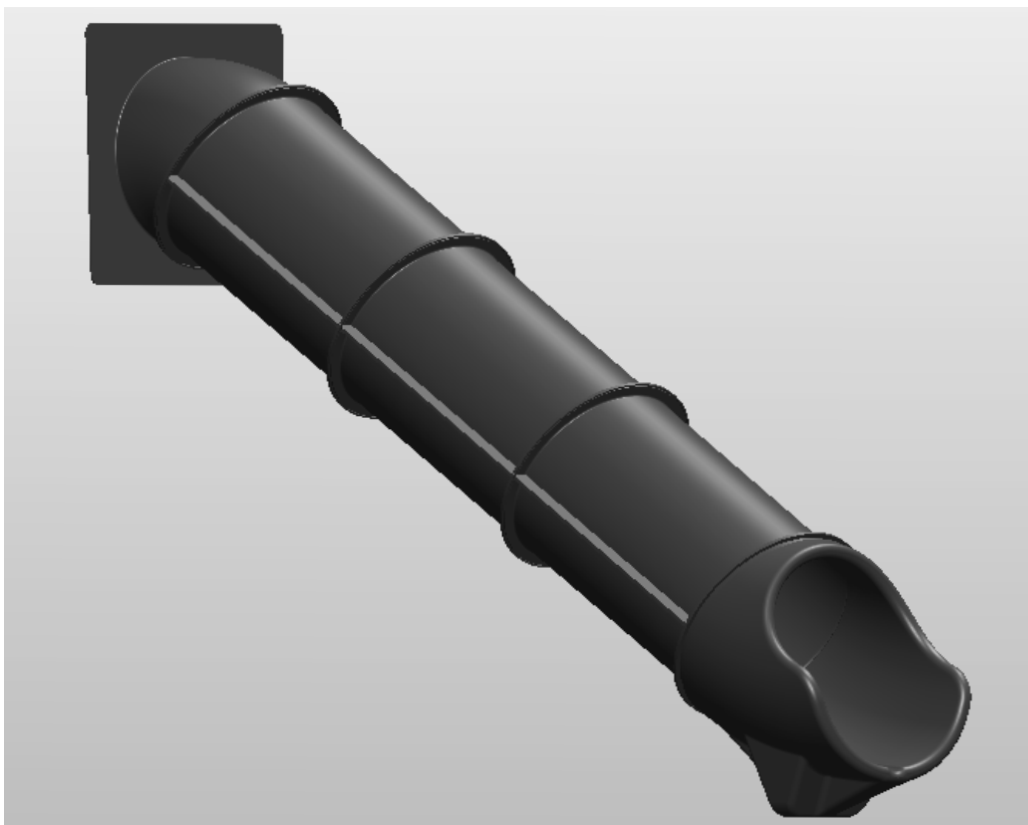
Step # 8

Double check and make sure all bolts are tight and secure. Do not overtighten bolts

Assembly Process

SAFETY PRECAUTIONS

- Make sure to follow instruction manual for your specific slide.
- Make sure the play structure that you are attaching the slide to is sturdy and able to support this type of equipment.
- Check and make sure all hardware is secured properly. This will need to be done as routine maintenance program on all playground equipment.
- This product is made to be used as a playground slide exclusively.
- If for any reason installation can not be completed thoroughly; do not leave slide or opening on play equipment in a unsafe manner to which injuries may occur.
- Please check with CPSC's recommendation for safety on their web site and follow their most recent handbook. www.cpsc.gov/cpscpub/pubs/324.pdf



Assembled 3 ft Tunnel Express

Proper installation is the responsibility of the installer.
Please contact Atlas Molding if any problems occur with the installation. (717) 556-8193