

9 ft. Turbo Twister Slide Assembly Manual

Assembly Manual for 9 ft. Turbo Twister Slide

Tools needed for assembly:

1/2" socket and socket wrench
1/2" wrench

Optional Tools:

cordless impact drill
socket adapter
1/2" Ratchet wrench
Electric drill
3/8" drill bit

HARDWARE:

(132) 5/16" x 1" bolts



(264) 5/16" washers



(120) 5/16" lock nuts



(13) 5/16"x 1 1/2" lag bolts



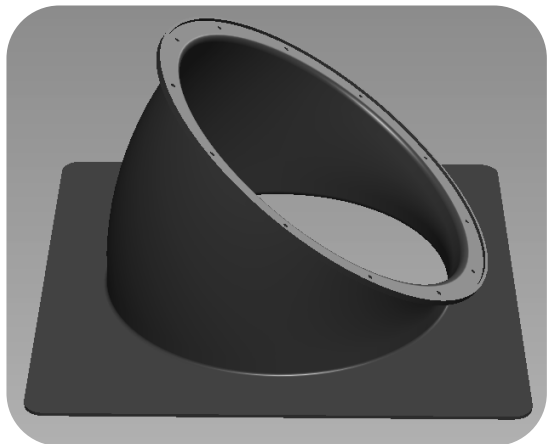
-(1) 12" Turbo Twister Support Chain



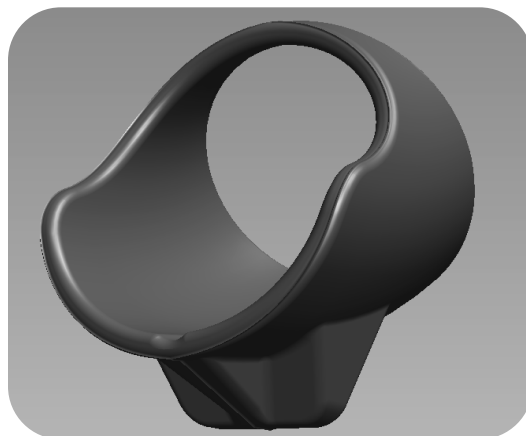
Assembly Manual for 9 f t . T u r b o T w i s t e r S l i d e

Parts:

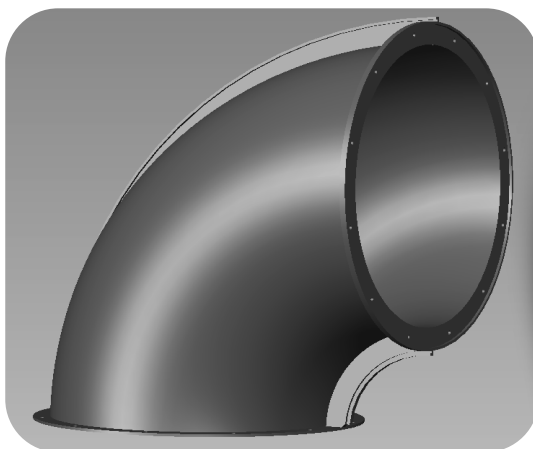
(1) Entry Tube with Cover plate



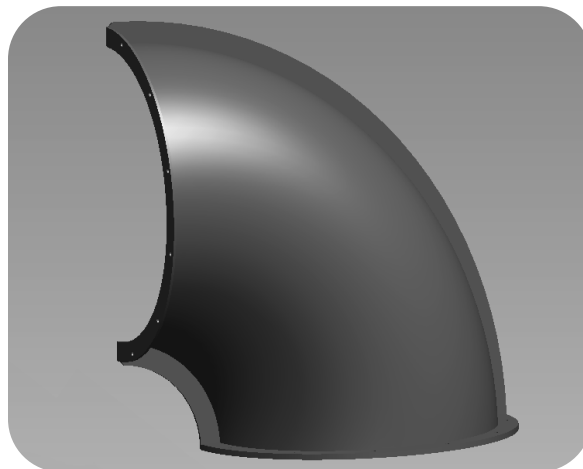
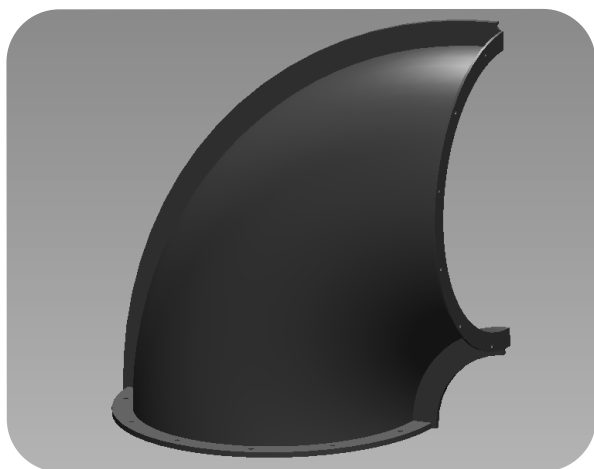
(1) Tube Slide Exit



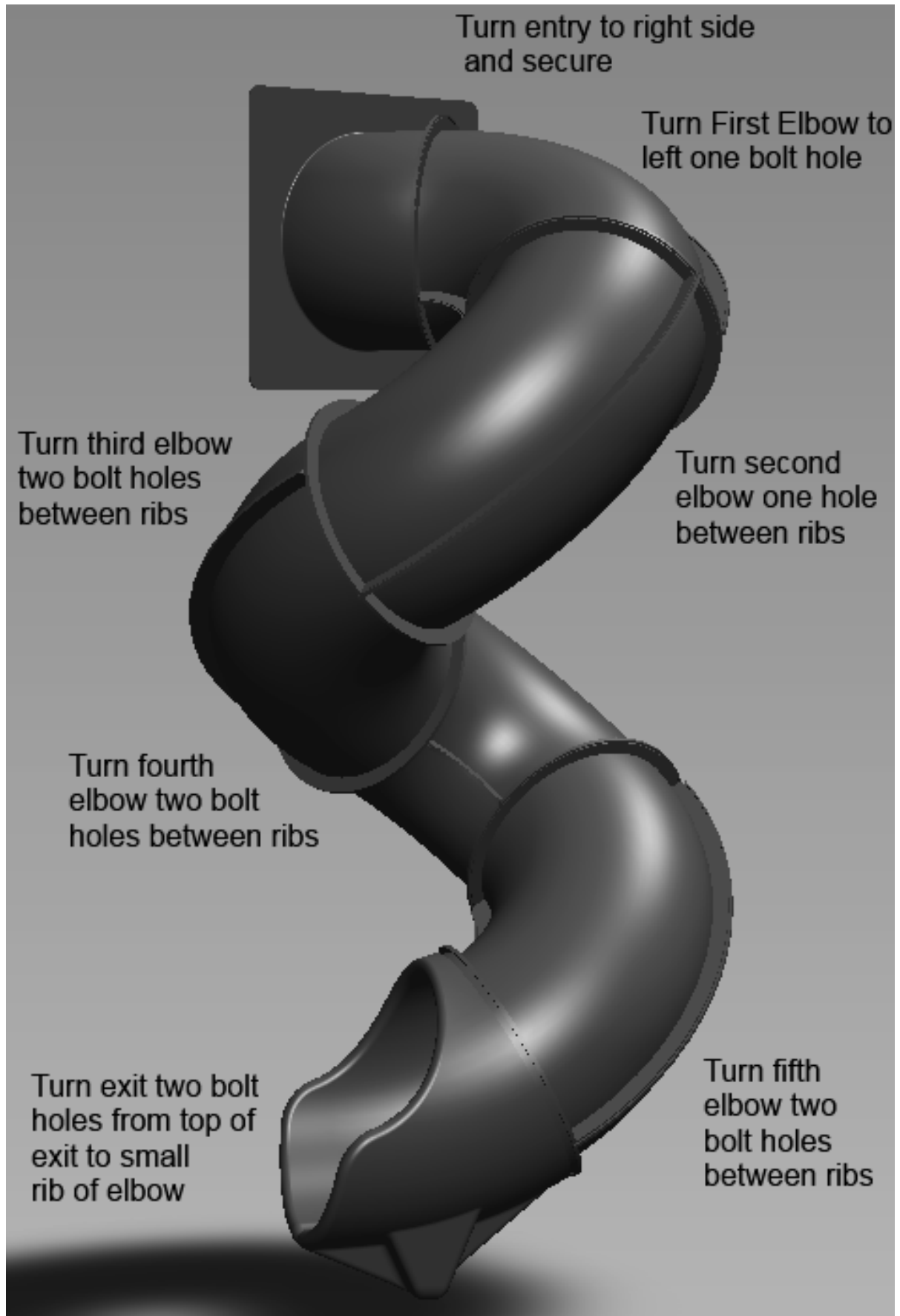
(5) 90 Degree Elbows



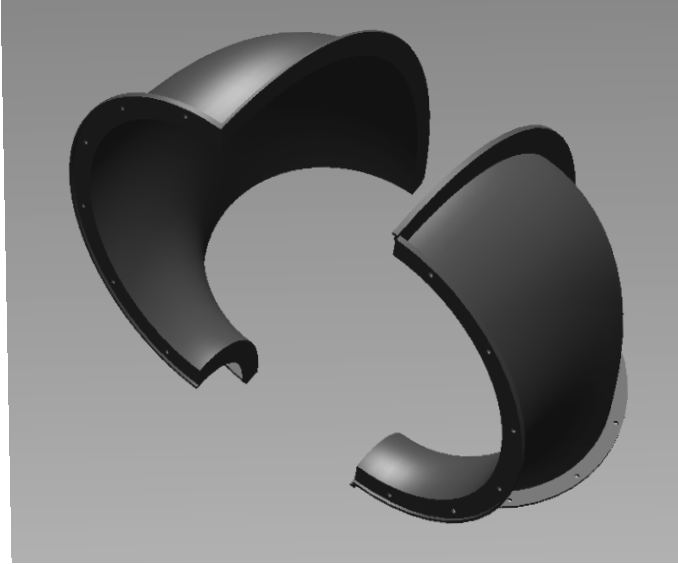
Elbows Consists of (5) Bottom and (5) Top Halves



Quick Reference Guide

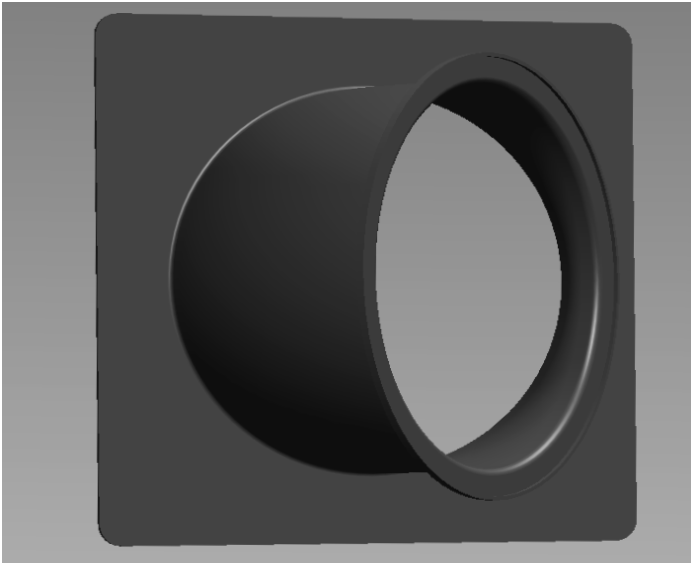


Assembly Process



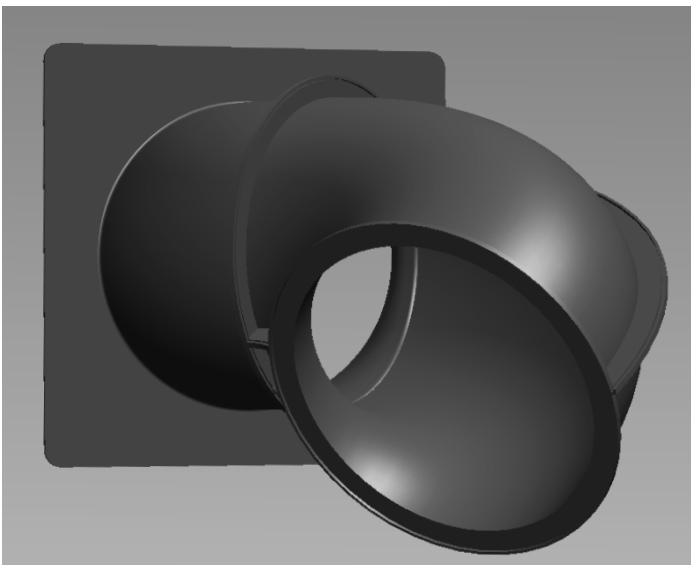
STEP #1

Assemble five elbows. Insert (12) bolts with washers through holes on overlap side of joining flanges. Secure bolts with (12) washers and locknuts on flange side of joining flanges then tighten with tools. Make sure overlaps and flanges are at same ends on both halves before assembly.



STEP #2

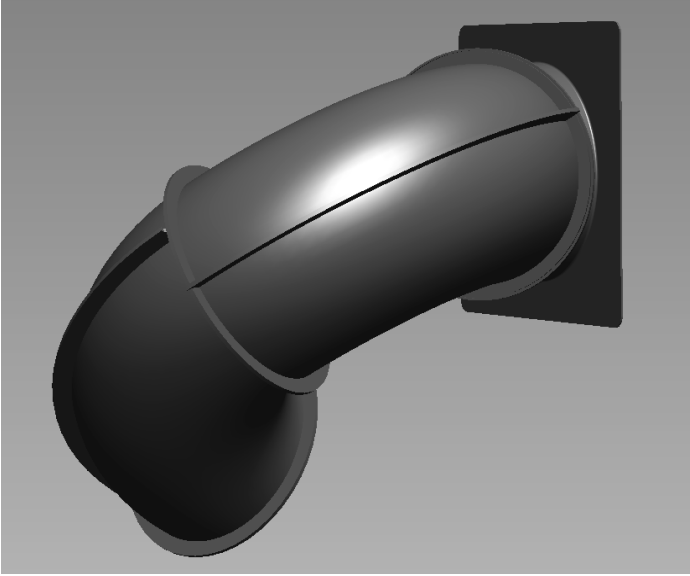
Turn Entry Tube so that it angles to the right side of opening. Center Entry Tube in opening and make sure bottom of Entry Tube hole is flush at 7 ft deck level. Secure Entry Tube with (12) lag bolts with washers around outside perimeter of cover plate.



Step #3

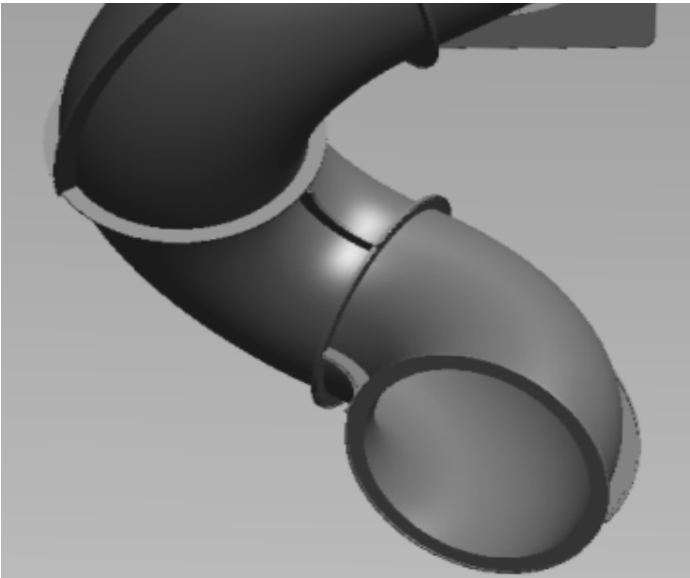
Position flange end of Elbow against overlap end of Entry Tube. Turn Elbow to left so that the joining flanges are horizontal. Then turn Elbow one bolt hole counterclockwise. Secure Elbow section to Entry Tube with (12) bolts, (24) washers, and (12) locknuts. Start locknuts on bolt threads and then tighten with tools.

Assembly Process



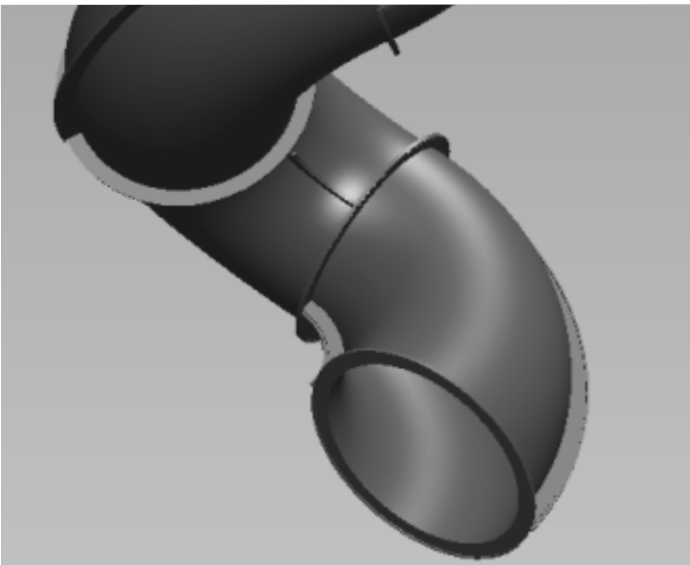
Step #4

Position second Elbow flange end against first Elbow overlap end so large joining flanges line up. Turn second elbow counterclockwise one bolt hole and then secure with (12) bolts, (24) washers, and (12) locknuts.



Step #5

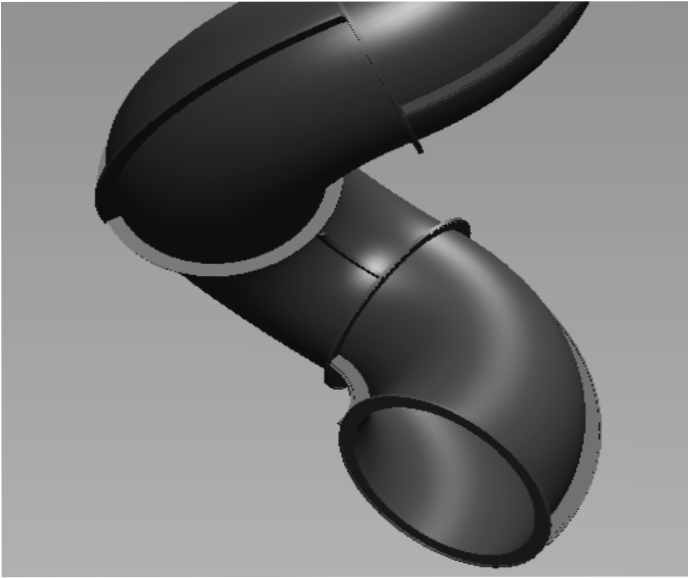
Position third Elbow with flange end against second Elbow overlap end so large joining flanges line up. Turn third Elbow counterclockwise two bolt holes and then secure with (12) bolts, (24) washers, and (12) locknuts.



Step # 6

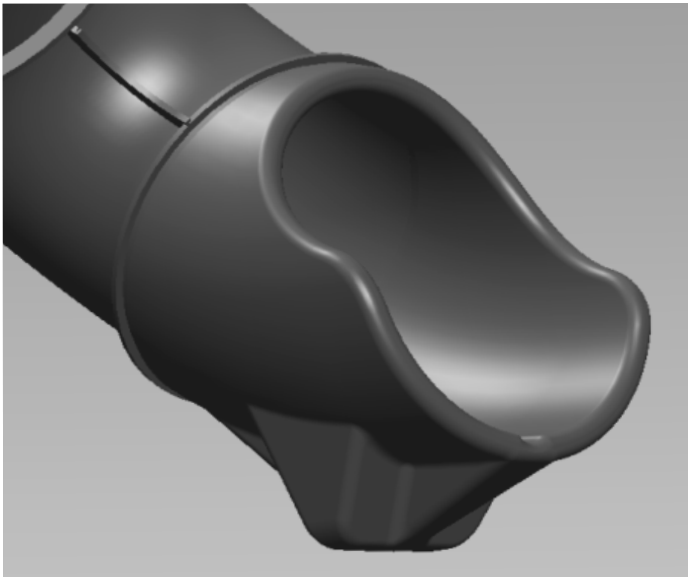
Position fourth Elbow with flange end, against third Elbow overlap end so large joining flanges line up. Turn fourth elbow counterclockwise two bolt holes and then secure with (12) bolts, (24) washers, and (12) locknuts.

Assembly Process



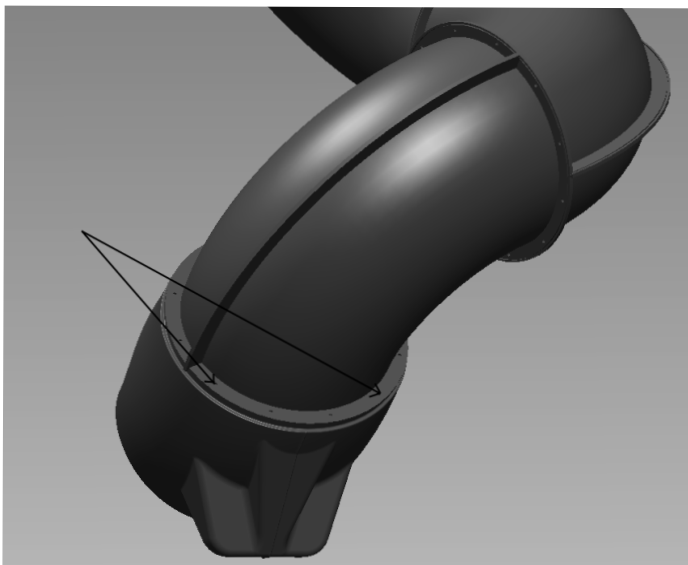
Step # 7

Position fifth Elbow with flange end, against fourth Elbow overlap end so large joining flanges line up. Turn fifth elbow counterclockwise two bolt holes and then secure with (12) bolts, (24) washers, and (12) locknuts.



Step # 8

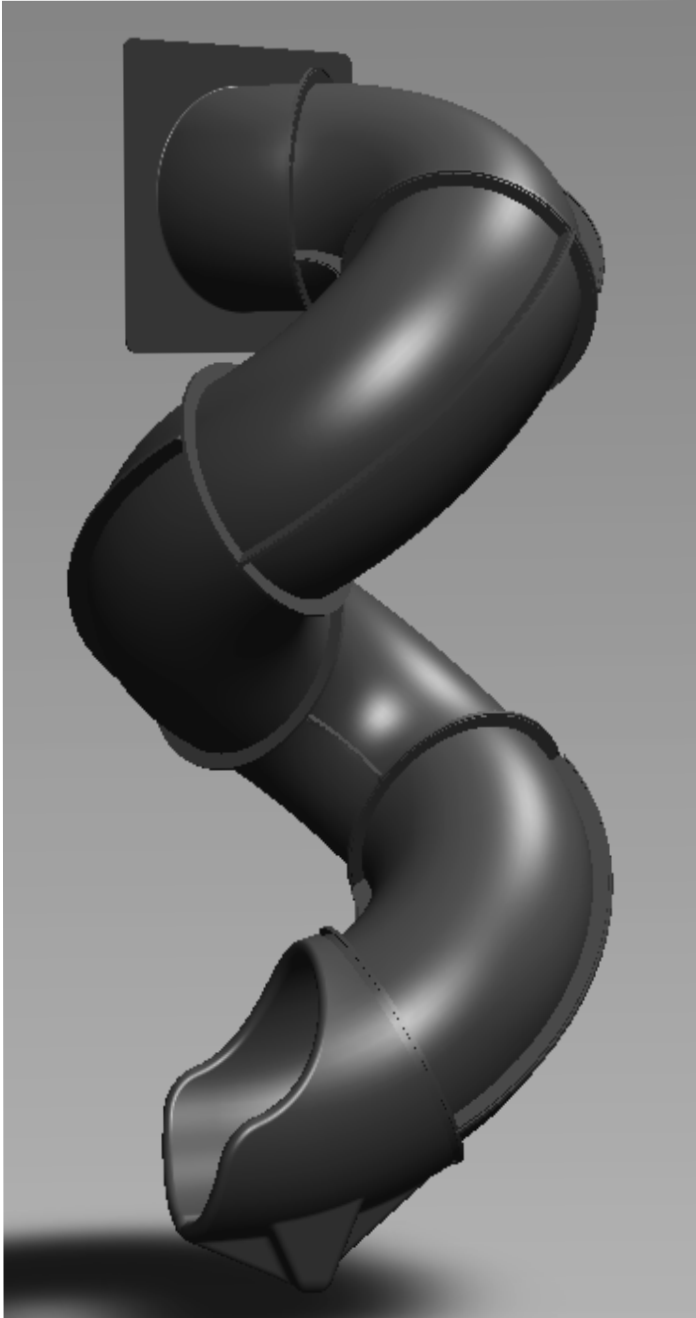
Install Tube Slide Exit section against trimmed overlap end of fifth Elbow. Loosen bottom bolts of Elbow on either side of joining flanges for better hole alignment. Install tube slide exit against fifth elbow flange so that sides of Tube Slide Exit are level with two bolts between top of exit and small rib on fifth elbow.



Step # 9

Secure trimmed over lap end of last Tube to Tube Slide Exit with two 5/16" bolts with washers at marked locations. Make sure bolts are started by hand first and then tighten. Install ten 5/16" x 1-1/2" lag bolts with washers in remaining holes, screwing them into the plastic exit, take care not to over-tighten.

A s s e m b l y P r o c e s s



Assembled 9ft Turbo Twister Slide

Step # 10

Check to make sure all bolts and lags are secured tightly on tube slide. Do not overtighten locknuts and lag bolts. Install Turbo Twister Support Chain from slide to upright support.

SAFETY PRECAUTIONS

- Make sure to properly follow instruction manual for your specific slide.
- Make sure the play structure that you are attaching the slide to is sturdy and able to support this type of equipment.
- Check and make sure all hardware is secured properly. This will need to be done as routine maintenance program on all playground equipment.
- This product is made to be used as a playground slide exclusively.
- If for any reason installation can not be completed thoroughly; do not leave slide or opening on play equipment in an unsafe manner to which injuries may occur.
- Please check with CPSC's recommendation for safety on their web site and follow their most recent handbook.
www.cpsc.gov/cpscpub/pubs/324.pdf

Proper installation and safety is the responsibility of the installer.

Please contact Atlas Molding if any problems occur with the installation. (717) 556-8193