



"MOLDING YOUR FUTURE"



5 ft. Turbo Twister Slide Assembly Manual ver.1

Assembly Manual for 5 ft Turbo Twister Slide

Tools needed for assembly:

1/2" socket and socket wrench
1/2" wrench

Optional Tools:

cordless impact drill
socket adapter
1/2" Ratchet wrench
Electric drill
3/8" drill bit

HARDWARE:

(98) 5/16" x 1" bolts



(217) 3/8" washers



(96) 5/16" lock nuts



(23) 5/16" x 1-1/2" lag bolts



-(1) 14" Turbo Twister Chain

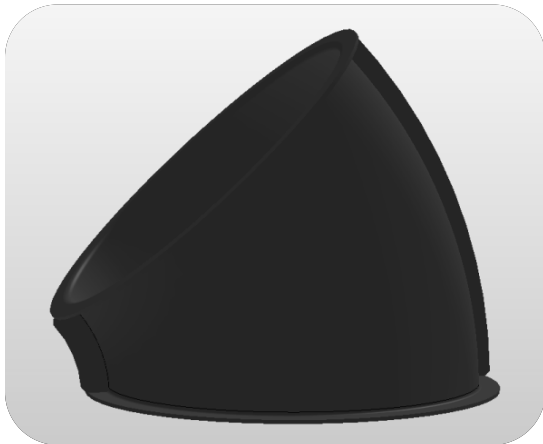


*Secure one end of chain to closest bolt on slide to play structure. Secure other end of chain to play structure with lag bolt and washer.

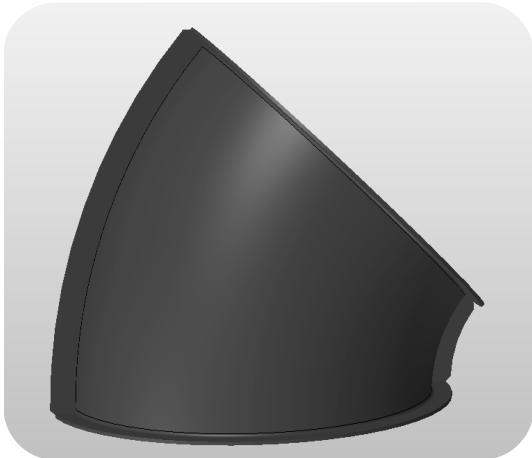
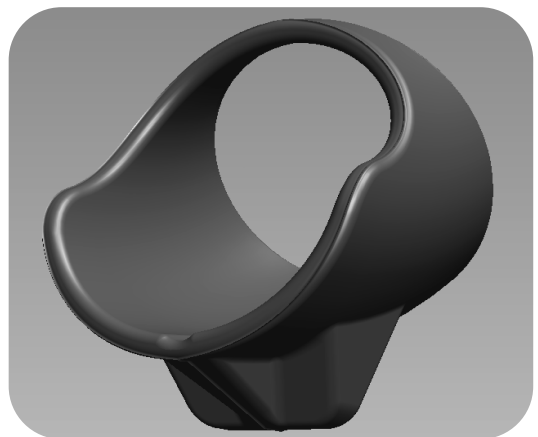
Assembly Manual for 5 ft Turbo Twister Slide

Parts:

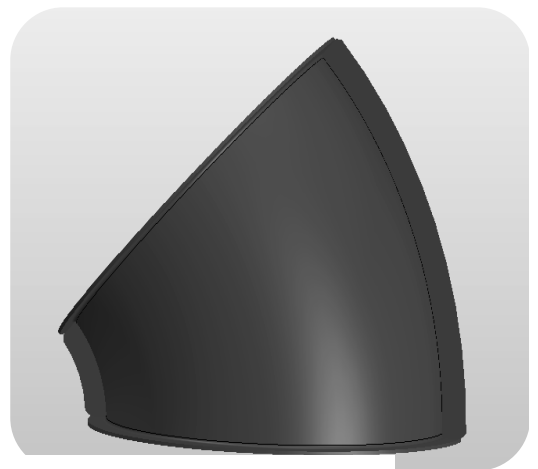
(6)- 45 Degree Elbows



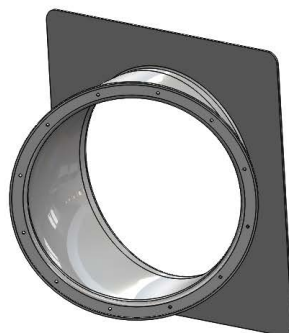
(1) Tube Slide Exit

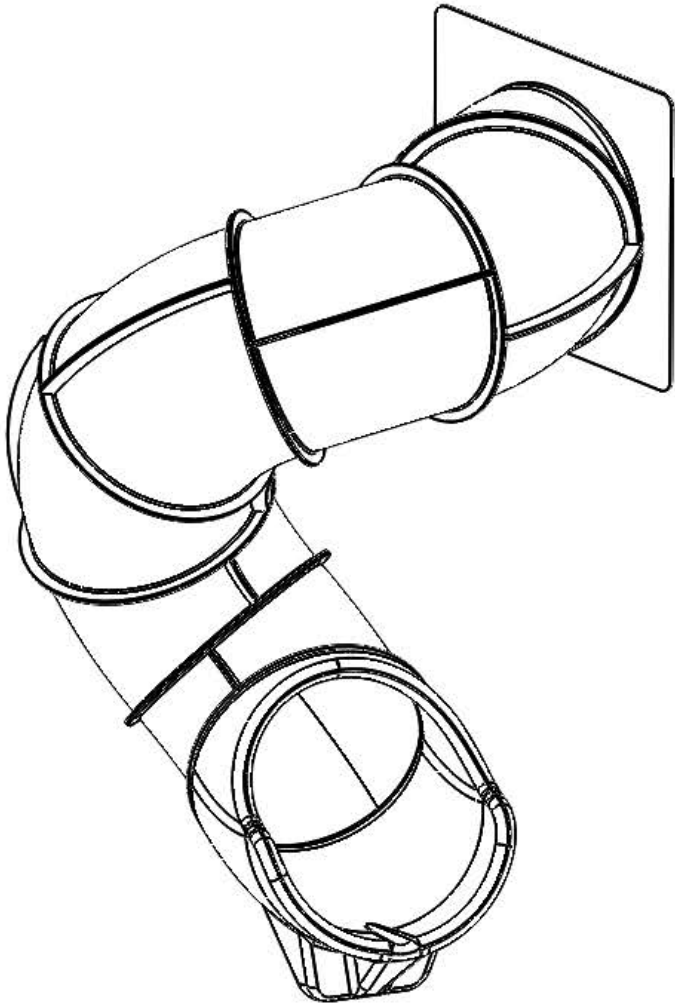


(6) - 45 degree
Elbows Consists
of (6) Bottom
and (6) Top
Halves.



(1) - Entry Tube
with Cover Plate





- 1st elbow- flanges are horizontal.
- 2nd elbow- spin CCW one bolt hole.
- 3rd elbow- spin CCW one bolt hole.
- 4th elbow- spin CCW one bolt hole.
- 5th elbow- spin CCW one bolt hole.
- 6th elbow- spin CCW one bolt hole.

Install exit so that the sides are equal and horizontal and with two holes between the top of the exit section and the small rib of the sixth elbow.

A s s e m b l y P r o c e s s



STEP #1- Assemble six elbows. Insert (6) bolts with washers through holes on overlap side of joining flanges. Secure bolts with (6) washers and locknuts on other side of joining flanges then tighten.



STEP #2- Turn Entry Tube so that it angles to the right side of opening. Center Entry Tube in opening and make sure bottom of Entry Tube hole is flush at 5 ft deck level. Secure Entry Tube with (12) lag bolts with washers around outside perimeter of cover plate.

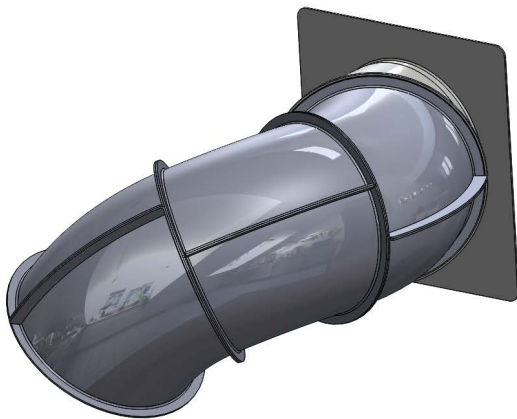


Step #3- Position flat flange end of 45 degree Elbow against overlap end of Entry Tube. Turn 1st Elbow so that the joining flanges are horizontal. Secure Elbow section to Entry Tube with (12) bolts, (24) washers, and (12) lock-nuts. Start locknuts on bolt threads and then tighten.

A s s e m b l y P r o c e s s



Step #4- Position 3rd Elbow flange end against 2nd Elbow overlap end so large joining flanges line up. Line up ribs of 2nd and 3rd Elbows and then secure with (12) bolts, (24) wash-ers, and (12) locknuts.



Step #5- Position third elbow with flange end against second elbow overlap end so large joining flanges line up. Turn third elbow counterclockwise one bolt hole and then secure with (12) bolts, (24) washers, and (12) locknuts.



Step # 6- Position fourth Elbow with flange end against third Elbow overlap end so large joining flanges line up. Turn fourth elbow counterclockwise one bolt hole and then secure with (12) bolts, (24) washers, and (12) locknuts.

A s s e m b l y P r o c e s s



Step # 7- Position fifth Elbow with flange end, against fourth Elbow overlap end so large joining flanges line up. Turn fourth elbow counterclockwise one bolt holes and then secure with (12) bolts, (24) washers, and (12) locknuts.



Step # 8- Position sixth Elbow with flange end against fifth Elbow overlap end so large joining flanges line up. Turn fourth elbow counterclockwise one bolt holes and then secure with (12) bolts, (24) washers, and (12) locknuts.



Step #9- Secure over lap end of last 7th Elbow Tube to Tube Slide Exit with (2) 5/16" bolts with washers. Secure two bolts into pressed nuts near the bottom of the Exit making sure the exit is level at both sides. Install 5/16" x 1-1/2" lag bolts with washers through remaining ten holes in elbow flange into plastic of the exit section, taking care not to overtighten lag bolts in plastic.



SAFETY PRECAUTIONS

- Make sure to properly follow instruction manual for your specific slide.
- Make sure the play structure that you are attaching the slide to is sturdy and able to support this type of equipment.
- Check and make sure all hardware is secured properly. This will need to be done as routine maintenance program on all playground equipment.
- This product is made to be used as a playground slide exclusively.
- If for any reason installation can not be completed thoroughly; do not leave slide or opening on play equipment in a unsafe manner to which injuries may occur.

Assembled 5ft Turbo Twister Slide

For installation the opposite direction of what has been shown, do these steps the opposite that you would use to assemble this slide (i.e. clockwise as opposed to counterclockwise, begin the entry angled to the left as opposed to the right).

Proper installation and safety is the responsibility of the installer. Please contact Atlas Molding if any problems occur with the installation. (717) 556-8193